

- Heavy-duty busbars for ground or power connection points for DC circuits.
- Ideal for creating a centralized power distribution or grounding point.
- Compact profile with insulated base.
- Includes sticker set and mounting hardware.



NEW

Single Row M6 Studs

Part Dimensions in MM

Number	Bus Bar Studs	A	B
BB4M6	4 x M6 (1/4")	146	101
BB6M6	6 x M6 (1/4")	206	161

Voltage: 48VDC max.

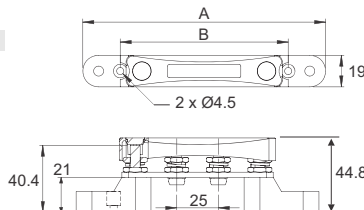
Rating: 100A

Body: Nylon, glass fibre reinforced.

Bus Material: Brass.

Studs & Hardware: Stainless steel.

Cover: Transparent. Included.



Feature:
Includes sticker set and mounting hardware.



Single Row M6 Studs & M4 Screws

Part Dimensions in MM

Number	Bus Bar Screws	A	B
BB6M4	6 x M4 (5/32")	146	101
BB12M4	12 x M4 (5/32")	206	161

Voltage: 48VDC max.

Rating: 150A

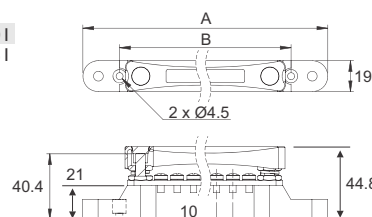
Body: Nylon, glass fibre reinforced.

Bus Material: Copper, Tin plated.

Studs: 2 x M6 (1/4")

Studs & Hardware: Stainless steel.

Cover: Transparent. Included.



Double Row M6 Studs & M4 Screws

Part Dimensions in MM

Number	Bus Bar	Bus Bar Screws	A	B
BBD6M4	Dual	2 x 6 x M4 (5/32")	118	107
BBD12M4	Dual	2 x 12 x M4 (5/32")	178	167

Voltage: 48VDC max.

Rating: 150A

Body: Nylon, glass fibre reinforced.

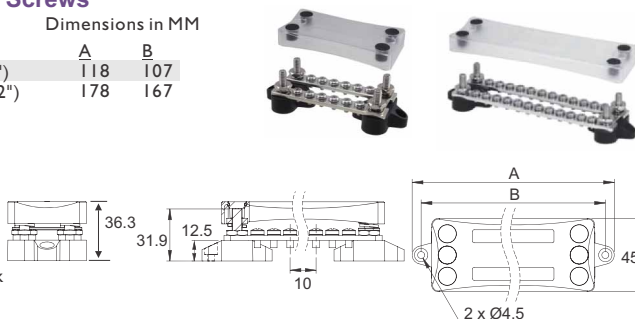
Bus Material: Copper, Tin plated.

Studs: 4 x M6 (1/4")

Studs & Hardware: Stainless steel.

Cover: Transparent. Included.

Features: Removable connecting link to separate or join the 2 bus bars.



Double Row Stepped M6 Studs & M4 Screws

Part Dimensions in MM

Number	Bus Bar	Bus Bar Screws	A	B
BBD6M4S	Dual	Pair of 6 x M4 (5/32")	94	75
BBD12M4S	Dual	Pair of 12 x M4 (5/32")	154	135

Voltage: 48VDC max.

Rating: 150A

Body: Nylon, glass fibre reinforced.

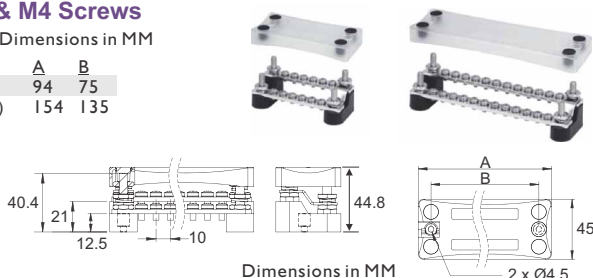
Bus Material: Copper, Tin plated.

Studs: 4 x M6 (1/4")

Studs & Hardware: Stainless steel.

Cover: Transparent. Included.

Features: Stepped design, bus bars are set at different heights.



Dimensions in MM

